

Offer name: Project for C-0020

Offer date: 08/02/2024
Expiration date: 31/03/2024

Sales Manager: James Oliver
Operator: Simon Reed

4 Season restaurant

3M34+FJQ, Bahama Ave

Nassau

BS

To the attention of:

Martin Smeet

Subject: P_C0038_0615 - Project for C-0020

Dear Sir,

Please find below your quotation as discussed. Should you wish to proceed, could I please ask you sign and date the final page of this quotation and return to me.

Please do not hesitate to contact me if I can be of any further assistance.

Terms of sale

Validity of Offer:	30 days
Terms of Payment:	In advance at order confirmation
Payment mode:	Credit Card or wired transfer

Best regards,

Simon Reed
Specifi Europe SRL

Offer name: Project for C-0020

Offer date: 08/02/2024
Expiration date: 31/03/2024

Area: 1 - COOKING AREA

1



COUNTER TOP GAS 4 BURNERS + ELECTRIC CONVECTION OVEN 2/1GN - HIGH POWER

Life-guaranteed nickel-plated cast iron High Power burners with single or double crown activated by a valve tap with safety thermocouple and pilot light. Cast iron grills. Trays are completely removable to enable maintenance and cleaning to be carried out easily and efficiently. Electric static oven made completely of STAINLESS STEEL with 4 levels for 2/1 GN grids/pans. Grill with salamander function on the upper side and a thermostat for correct temperature regulation from 50° to 270° C. Pilot light and temperature indicator light. Pressed door and counter door made of AISI 304 stainless steel of 20/10 thickness. High resistance door handle of AISI 304 steel of 20/10 thickness. Adjustable feet. Standard: no. 1 anti-tilting oven grid.

Code: 18705000

Supplier: BERTOS

Net dimensions: 800 x 700 x 900 mm

Volume: 0.841192 m³

Model: G7F4+FE

Manufacturer: BERTOS

Net weight: 107 kg

List price:

5157.10€

Your discount:

-25%/-10%

Unit price: 3481.04€

Quantity: 1

Amount:

3481.04€



E Apparent Power: 7.5kW, Volts: 7V, Cycle: 2Hz, Phase: 3, Electric power: 7.5kW, Number of Poles: 3



G Nominal Gas power: 21kW, Gas Size: 3/8", Gas power kW: 21kW, Gas Connection Type: 2

Amount with accessories: 3481.04€

2



4 ZONES INDUCTION TOP

Worktop and front panels made of AISI 304 stainless steel. Pyroceram top of 6 mm thickness. Maximum energy saving since the heating of the cooking area is enabled only when the pan is in direct contact with the surface. The heating zone is self-regulated according to the pan diameter. Immediate automatic interruption when the pan is removed from the top. Electronic regulation of the temperature, thanks to a potentiometer. The digital gauge immediately shows the set power level between 1 and 9. High resistance handle of AISI 304 steel with 20/10 thickness. Adjustable feet.

Code: 18736200

Supplier: BERTOS

Net dimensions: 800 x 700 x 900 mm

Volume: 0.841192 m³

Model: E7P4M/IND

Manufacturer: BERTOS

Net weight: 50 kg

List price:

16382.60€

Your discount:

-25%/-10%

Unit price: 11058.26€

Quantity: 1

Amount:

11058.26€



E Apparent Power: 14kW, Volts: 7V, Cycle: 2Hz, Phase: 3, Electric power: 14kW, Number of Poles: 3

Amount with accessories: 11058.26€

3



ELECTRIC FRY TOP, SMOOTH COMPOUND PLATE 393X500 MM, OPEN SUPPORT

Worktop and front panels from AISI 304 stainless steel. Incoloy steel heating elements placed under the cooking plate. Thermostatic control and safety thermostat with manual restart. Temperature regulation from 50 to 270 °C. Power indicator and temperature light. Very thick smooth plate with flush splashguard. Two-component cooking plate, which combines a steel plate to optimize uniformity with an upper coating in AISI 316 polished stainless steel for easy cleaning and low level of radiation, for greater operator comfort. Slightly inclined cooking surface with a largely sized drain hole and a line to the drain pan. Particularly suitable for gentle cooking. Adjustable feet.

Code: 18401900

Supplier: BERTOS

Net dimensions: 400 x 714 x 900 mm

Volume: 0.449273 m³

Model: E7FL4MP/CPD

Manufacturer: BERTOS

Net weight: 48 kg

List price:

3003.00€

Your discount:

-25%/-10%

Offer name: Project for C-0020

Offer date: 08/02/2024
Expiration date: 31/03/2024

Unit price: 2027.02€ Quantity: 1 Amount: 2027.02€



E Apparent Power: 4.8kW, Volts: 7V, Cycle: 2Hz, Phase: 3, Electric power: 4.8kW, Number of Poles: 3

Amount with accessories: 2027.02€

4 304 S/S ISLAND HOOD+FILTERS 240X140

Code: H039
Supplier: RENDERIMAGE
Net dimensions: 2400 x 1200 x 400 mm
Volume: 0 m³

Model: H039
Manufacturer: RENDERIMAGE
Net weight: 64 kg

List price: 1625.00€
Your discount: -25%/-10%

Unit price: 1096.88€ Quantity: 1 Amount: 1096.88€

Amount with accessories: 1096.88€

5 ELECTRIC COMBI OVEN 10 X 1/1 GN ICOMBI PRO - RIGHT-HINGED DOOR



Intelligent, connectable cooking system with the operating modes poultry, meat, fish, egg dishes/desserts, side dishes/vegetables, baked goods and finishing as well as the cooking methods roasting, cooking, baking and grilling. Efficient food production: The iProductionManager plans production processes and indicates which foods are best cooked together. Streamlines processes, saves time and energy. Ultrafast cleaning: A clean unit in approx 12 minutes, this can only be done by the iCombi Pro. Even the standard clean saves 50% in time and cleaner. Stay clean, less downtime, more productive time. Carefully designed: More fan wheels, optimised cooking cabinet shape, increased dehumidification performance all mean up to 50% larger loads and even better food quality. For even higher productivity. Intuitive operating concept: The new operating concept runs through the production process with visual imagery, logical work steps and clear, interactive instructions. So that everyone can work error-free from the start. Cooking intelligence: The iCookingSuite knows the way to your desired cooking result and produces it time and time again. With excellent quality. You can also intervene at any time during the cooking process, or switch from a single, to a mixed load. This is freedom, this is flexibility. Integrated WLAN: The integrated WLAN-interfaces means the iCombi Pro connects easily both to the Internet and to your smartphone in order to connect with ConnectedCooking. For more convenience, security and inspiration.

Code: CD1ERRA-R
Supplier: RATIONAL
Net dimensions: 850 x 775 x 1020 mm
Volume: 0 m³

Model: ICP 10-1/1
Manufacturer: RATIONAL
Net weight: 155 kg

List price: 22758.12€
Your discount: -25%/-10%

Unit price: 15361.73€ Quantity: 1 Amount: 15361.73€



E Apparent Power: 18.9kW, Volts: 5V, FL Amps: 24.8A, Cycle: 2Hz, Phase: 3, Electric power: 18.9kW, Number of Poles: 3



CW Cold Water Size: 3/4", Cold Water Minimum Pressure: 1bar, Cold Water Flow: 1.1988L/s



W Indirect Waste Size: 2", Direct Waste Size: 2"

Accessories 5.01

ELECTRIC ULTRAVENT CONDENSATION HOOD

Code: 60.75.134
Supplier: RATIONAL
Net dimensions: 850 x 775 x 313 mm

Model: 60.75.134
Manufacturer: RATIONAL
Net weight: 0 kg

Offer name: Project for C-0020

Offer date: 08/02/2024
Expiration date: 31/03/2024

Volume: 0 m³

List price: 6251.38€
Your discount: -25%/-10%



Unit price: 4219.68€ Quantity: 1 Amount: 4219.68€



E Apparent Power: 0.36kW, Volts: 6V, FL Amps: 1.56A, Cycle: 2Hz, Phase: 1, Electric power: 0.36kW, Number of Poles: 1

5.02

STAND UG II STANDARD, SIDE PANELS WITH 14 PAIRS OF RAILS



Code: 60.31.086
Supplier: RATIONAL
Net dimensions: 850 x 703 x 699 mm
Volume: 0 m³

Model: 60.31.086
Manufacturer: RATIONAL
Net weight: 0 kg

List price: 1771.25€
Your discount: -25%/-10%

Unit price: 1195.59€ Quantity: 1 Amount: 1195.59€

Amount with accessories: 20777.00€

Area Total: 38440.20€

Offer name: Project for C-0020

Offer date: 08/02/2024
Expiration date: 31/03/2024

Area: 2 - PREPARATION AREA

9	SPECIAL SLIDING DOORS CUPBOARD WITHOUT WORKTOP			
	Code: SP_SLIDING_CUPB	Model: SP_SLIDING_CUPB		
	Supplier: SPECIAL	Manufacturer: SPECIAL		
	Net dimensions: 1500 x 700 x 860 mm	Net weight: 0 kg		
	Volume: 0 m ³			
		List price:	1430.00€	
		Your discount:	-25%/-10%	
	Unit price: 965.25€	Quantity: 1	Amount:	965.25€

Amount with accessories: 965.25€

10	SPECIAL DRAWER WITHOUT WORKTOP			
	Code: SP_DRAWER	Model: SP_DRAWER		
	Supplier: SPECIAL	Manufacturer: SPECIAL		
	Net dimensions: 600 x 700 x 860 mm	Net weight: 0 kg		
	Volume: 0 m ³			
		List price:	845.00€	
		Your discount:	-25%/-10%	
	Unit price: 570.38€	Quantity: 1	Amount:	570.38€

Amount with accessories: 570.38€

11	SPECIAL HINGED DOORS CUPBOARD WITHOUT WORKTOP			
	Code: SP_HINGED_CUPB	Model: SP_HINGED_CUPB		
	Supplier: SPECIAL	Manufacturer: SPECIAL		
	Net dimensions: 1932.56 x 700 x 860 mm	Net weight: 0 kg		
	Volume: 0 m ³			
		List price:	1365.00€	
		Your discount:	-25%/-10%	
	Unit price: 921.38€	Quantity: 1	Amount:	921.38€

Amount with accessories: 921.38€

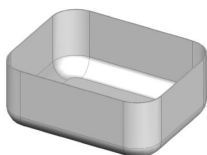
12	SPECIAL TABLE WITHOUT WORKTOP			
	Code: SP_TABLE	Model: SP_TABLE		
	Supplier: SPECIAL	Manufacturer: SPECIAL		
	Net dimensions: 1199.93 x 700 x 860 mm	Net weight: 0 kg		
	Volume: 0 m ³			
		List price:	929.50€	
		Your discount:	-25%/-10%	
	Unit price: 627.41€	Quantity: 1	Amount:	627.41€

Offer name: Project for C-0020

Offer date: 08/02/2024
Expiration date: 31/03/2024

Amount with accessories: 627.41€

13 BUILT-IN RECTANGULAR SINK 500X400X200 MM



Code: SPSSSQS504020
Supplier: SP SYMBOLS
Net dimensions: 500 x 400 x 200 mm
Volume: 0 m³

Model: SPSSSQS504020
Manufacturer: SP SYMBOLS
Net weight: 14 kg

List price: 260.00€
Your discount: -25%/-10%

Unit price: 175.50€ Quantity: 1 Amount: 175.50€

W Indirect Waste Size: 2", Direct Waste Size: 2"

**Accessories
13.01**

1/2" WATER MIXER TAP, DOME HEAD CONTROL



Code: SPSSMFMT88
Supplier: SP SYMBOLS
Net dimensions: 0 x 0 x 0 mm
Volume: 0 m³

Model: SPSSMFMT88
Manufacturer: SP SYMBOLS
Net weight: 0 kg

List price: 86.67€
Your discount: -25%/-10%

Unit price: 58.50€ Quantity: 1 Amount: 58.50€

HW Hot Water Size: 1/2"

CW Cold Water Size: 1/2"

Amount with accessories: 234.00€

Area Total: 3318.42€

Offer name: Project for C-0020

Offer date: 08/02/2024
Expiration date: 31/03/2024

Area: 3 - REFRIGERATION AREA

6

HOT CUPB. VENT+UPST+SHELF+SLIDING D. 1400



Made entirely from stainless steel. Inner welded frame in stainless steel. Unique connection of panels to inner frame. The 50mm high worktop in 304 AISI stainless steel, 1mm in thickness, incorporates a layer of sound deadening material and has upturned edges. Upstand [h:100mm] with 8mm rounded edge. Sound-deadened sliding doors. Base panel in 304 AISI stainless steel and height-adjustable intermediate shelf. Mounted on feet, adjustable in height. Ventilated hot air flow system guarantees temperature evenness, air flows underneath the intermediate shelf and throughout the cabinet. Thermostat with digital display to adjust the internal temperature [up to 75°C].

Code: 132792

Model: MTC1410PN

Supplier: ELECTROLUX PROFESSIONAL

Manufacturer: ELECTROLUX PROFESSIONAL

Net dimensions: 1400 x 700 x 1000 mm

Net weight: 0 kg

Volume: 1.2 m³

List price: 2210.00€

Your discount: -25%/-10%

Unit price: 1491.75€

Quantity: 1

Amount:

1491.75€



E Apparent Power: 2.4kW, Volts: 6V, Cycle: 2Hz, Phase: 1, Electric power: 2.4kW, Number of Poles: 1

Amount with accessories: 1491.75€

7

WORK TABLE WITH UPSTAND 2000 MM



The 50mm high worktop in 304 AISI stainless steel, 1mm in thickness, has upturned edges and incorporates a layer of sound deadening, waterproof and fireproof material. Integral radiused rear upstand, h:100mm. Square section legs 40x40mm on 1" height-adjustable feet in 304 AISI stainless steel.

Code: 132759

Model: TG2010PN

Supplier: ELECTROLUX PROFESSIONAL

Manufacturer: ELECTROLUX PROFESSIONAL

Net dimensions: 1999 x 700 x 1000 mm

Net weight: 0 kg

Volume: 0.49 m³

List price: 1014.00€

Your discount: -25%/-10%

Unit price: 684.45€

Quantity: 1

Amount:

684.45€

Accessories 7.01



ADDITIONAL DRAWER 600 MM

Code: 855295

Model: C600ADD

Supplier: ELECTROLUX PROFESSIONAL

Manufacturer: ELECTROLUX PROFESSIONAL

Net dimensions: 600 x 600 x 100 mm

Net weight: 0 kg

Volume: 0.07 m³

List price: 156.00€

Your discount: -25%/-10%

Unit price: 105.30€

Quantity: 1

Amount:

105.30€

Amount with accessories: 789.75€

8

WORKTOP 40 MM THICK WITH REAR BACKSPLASH

Stainless steel worktop AISI 304 satin finish. Sound deadening, water- fireproof panel underneath.

Code: SPCWEUT70X4-1

Model: SPCWEUT70X4-1

Supplier: SP SYMBOLS

Manufacturer: SP SYMBOLS

Net dimensions: 1000 x 700 x 40 mm

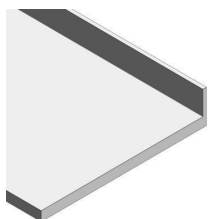
Net weight: 40 kg

Volume: 0.03 m³

List price: 377.00€

Offer name: Project for C-0020

Offer date: 08/02/2024
Expiration date: 31/03/2024



Your discount:

-25%/-10%

Unit price: 254.48€

Quantity: 1

Amount:

254.48€

Amount with accessories: 254.48€

14

SPECIAL COLD ROOM



Code: COLDROOM

Supplier: SPECIAL

Net dimensions: 2325.915 x 2138.319 x 2600 mm

Volume: 0 m³

Model: COLDROOM

Manufacturer: SPECIAL

Net weight: 0 kg

List price:

24076.00€

Your discount:

-25%/-10%

Unit price: 16251.30€

Quantity: 1

Amount:

16251.30€

Accessories

14.10



SWING DOORS FOR THE CONSERVATION 60 M / M, WHITE ALUMINIUM FRAME

Blade:

- Density polyurethane insulation 40 kg / mc;
- 1006 white standard color, coated with PE film;
- Insulation thickness - 60 mm for conservation, with overlay;
- 120 mm for freezing, with semi-recessed sheet;
- Perimeter weatherstrip seal, mounted on PVC profile pression;
- Free passage ceiling 1,200 mm in width.

Setting:

- Manufactured using extruded aluminum profiles;
 - Lateral extension profiles for adaptation to any panel thickness;
 - Standard finish lacquered white RAL 9010;
- aluminum sill type in L.

Hardware:

- Gray polyamide hinges 2 pcs, with ramp truck and steel joint pin;
- Blue and gray seal a point of composite liave dotato of lock;
- Interior security release.

Code: SCR_DOORWIN190095

Supplier: SPECIAL

Net dimensions: 950 x 100 x 1900 mm

Volume: 0 m³

Model: SCR_DOORWIN190095

Manufacturer: SPECIAL

Net weight: 0 kg

List price:

1885.00€

Your discount:

-25%/-10%

Unit price: 1272.38€

Quantity: 1

Amount:

1272.38€

14.11

ELECTRICAL CONTROL BOARD

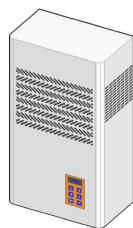
Electrical control board

Code: SCR_LCONTROLLER_2

Model: SCR_LCONTROLLER_2

Offer name: Project for C-0020

Offer date: 08/02/2024
Expiration date: 31/03/2024



Supplier: SPECIAL
Net dimensions: 340 x 200 x 600 mm
Volume: 0 m³

Manufacturer: SPECIAL
Net weight: 0 kg

List price: 1157.00€
Your discount: -25%/-10%

Unit price: 780.98€	Quantity: 1	Amount:	780.98€
----------------------------	--------------------	----------------	----------------

Amount with accessories: 18304.66€

Area Total: 20840.64€

0.00€

Net Total:	62599.26€
-------------------	------------------

Final discount:	62599.26€
------------------------	------------------

VAT (+20%):	+20%
--------------------	-------------

Total Value:	75119.11€
---------------------	------------------